



PELLET MILL **N-Midi**



N-MIDI pellet mill has the following general specifications, valid for each model:

PELLET MILL	Unit of measurement	N-MIDI
Dies cutter internal diameter	mm	400
Rollers diameter	mm	180
Pellet diameter	mm	6
Dimensions	mm	1800x1500x2000
Weight	Kg	3500



Technical specification:

PELLET MILL N-MIDI	A	B	C	D
ELECTRIC POWER				
Active power installed	30 Kw	45 Kw	55 Kw	70Kw
Electric source	V 400 +/- 10% Hz 50/60			
PELLET PRODUCTION PER HOUR				
<u>Kg/h</u> soft materials (like fir, pine and poplar tree)	350/450	550/700	650/850	800/1000
<u>Kg/h</u> hard materials (like beech, oak and olive tree)	300/400	500/600	600/700	750/950

General information for raw material to be used to load pellet mill machinery:

- ♦ Consistency : saw dust or material size among 0.5 mm and 1.5 mm
- ♦ Moisture rate : between 8% and 12%
- ♦ Characteristics : pure material (without metal material or everything different from main)

Technical innovations of N-MIDI pellet mill (respect to pellet mill for feed business sector):

- Same innovative and patented N-PLUS system of die cutter s' loading and compression
- Pellet production without additives, from natural origin or not
- High efficiency servo drive engines (ENERGY SAVING)
- One central screw to load saw dust into the dies
- Rollers attached in two sides to the structure of the machinery
- Natural additive for start and stop production cycle (to avoid saw dust hardness inside the dies during machinery stop)
- Compact size machinery
- Fast tools change by the direct front machine 's opening that permit low time and cost for maintenance and cleaning



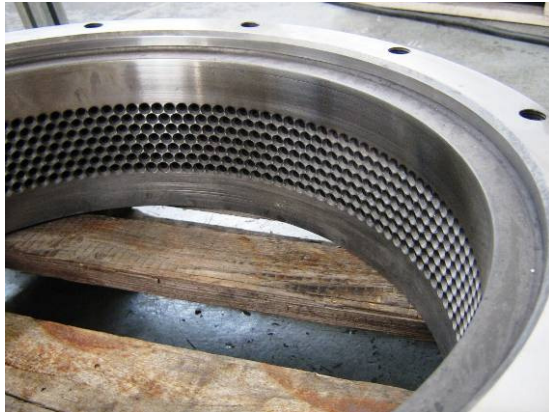
General specifications of N-MIDI pellet mill:

- Pellet mill with mechanical and electrical functioning system
- System control and management by PCL
- Manual rollers regulation (tools that permit the rotation of the dies)
- Saw dust loading system is composed by a stainless steel mini-silos and a screw (regulated by an inverter connected to the dies charge)
- Dies' holes' length from 14 to 50 mm, in accordance to the raw materials we are going to pelletize (saw dust or other vegetal or agricultural residuals)
- Minimum and maximum level on the saw dust storage
- Automatic grease lubrication for engine, managed by Plc system
- Automatic grease lubrication for rollers and drill
- Front side pellet unloading
- Electrical safety locks
- Engine area hardware protected
- Predisposition for dust and steam catcher line
- Instruction manual and CE conformity certificate

N-MIDI pellet mill machine is projected and manufactured in accordance with CE norm about construction's prescriptions and safety. Besides, Nova Pellet S.r.l. has obtained in 2007 the Italian patent for the innovative system of die cutter s' loading and compression. With N-MIDI you will save money and get **lower pellet production cost**, because we have developed a basic **low relation between electrical Kw consumed and pellet production Kg per hour (ENERGY SAVING)**. In fact, N-MIDI has been projected and developed properly for pellet production and all technologies and mechanical solutions are chosen to get the best economic advantageous respect other producers and obtain the **best quality pellet** on market, completely without additives, from natural origin or not. Therefore, with N-MIDI and others Nova pellet mill machineries, you can sell pellet both to private or industrial market and gain on **low maintenance and production cost**.



Nova Pellet staff is able to supply immediate and complete assistance and support on its pellet mills installed all over the world. Besides, with its 30 years' experience, Nova Pellet manufactures and supplies all spare parts of all the models of Pellet Mill Machinery:



DIES CUTTER



ROLLERS

N-PACK

Nova Pellet project and developed a packaging modular structure to install besides **N-MIDI 30 and 45 KW** models.

N-PACK permit to package directly pellet production into 15 kg bags: a vibrating screen cleans the pellet, then a tilted conveyor belt load a cistern to storage pellet, here you can package the pellet into 15 kg bags, pressing a valve. Then you can weld the bags and sell it.

N-PACK is composed by:

- Vibrating screen;
- Tilted conveyor belt;
- Pellet storage hopper;
- Weighing bag machine kg 15;
- Welding machine;
- Electrical board.



In the following picture you can see, first, N-Pack packaging system



and, second, N-MIDI 30 KW pellet mill installed with N-PACK packaging system:



NOVA PELLET SRL
SALES OFFICE